



# Monthly Report on Short-term Transactions of Electricity in India

February, 2020



Economics Division  
Central Electricity Regulatory Commission  
36, Janpath, Chanderlok Building



# Contents

S.No.	Contents	Page No
	Contents	i
	List of Tables and Figures	ii
	Abbreviations	iii
	Introduction	1
I	Volume of Short-term Transactions of Electricity	1
II	Price of Short-term Transactions of Electricity	2
(i)	<i>Price of electricity transacted through Traders</i>	2
(ii)	<i>Price of electricity transacted through Power Exchanges</i>	3
(iii)	<i>Price of electricity transacted through DSM</i>	3
III	Trading Margin	3
IV	Volume of Short-term Transactions of Electricity (Regional Entity-wise)	3
V	Congestion on Inter-State Transmission Corridor for Day-Ahead Market on Power Exchanges	4
VI	Volume and Price of Renewable Energy Certificates (RECs)	5
VII	Inferences	7

# List of Tables and Figures

S.No.	List of Tables and Figures	Page No.
<b>I List of Tables</b>		
Table-1	Volume of Short-term Transactions of Electricity in India	9
Table-2	Percentage Share of Electricity Transacted by Trading Licensees	11
Table-3	Price of Electricity Transacted through Traders	12
Table-4	Price of Electricity Transacted through Traders (Time-wise)	12
Table-5	Price of Electricity Transacted through Power Exchanges	12
Table-6	Volume and Price of Electricity in Term Ahead Market of IEX	12
Table-7	Volume and Price of Electricity in Term Ahead Market of PXIL	12
Table-8	Price of Electricity Transacted through DSM	12
Table-9	Volume of Electricity Sold through Bilateral	14
Table-10	Volume of Electricity Purchased through Bilateral	15
Table-11	Volume of Electricity Sold through Power Exchanges	16
Table-12	Volume of Electricity Purchased through Power Exchanges	18
Table-13	Volume of Electricity Under drawal through DSM	19
Table-14	Volume of Electricity Over drawal through DSM	22
Table-15	Total Volume of Net Short-term Transactions of Electricity (Regional Entity-wise)	25
Table-16	Details of Congestion in Power Exchanges	28
Table-17	Volume of Short-term Transactions of Electricity in India (Day-wise)	29
Table-18	Price of Electricity in Short-term Transactions (Day-wise)	30
Table-19	Volume of Short-term Transactions of Electricity (Regional Entity-wise)	31
Table-20	Volume and Price of Renewable Energy Certificates (RECs) Transacted through Power Exchanges	34
<b>II List of Figures</b>		
Figure-1	Volume of Short-term Transactions of Electricity	9
Figure-2	Volume of Various Kinds of Electricity Transactions in Total Electricity Generation	9
Figure-3	Volume of Short-term Transactions of Electricity (Day-wise)	10
Figure-4	Percentage Share of Electricity Transacted by Trading Licensees	11
Figure-5	Price of Electricity in Short-term Transactions	13
Figure-6	Price of Electricity in Short-term Transactions (Day-wise)	13

## Abbreviations

Abbreviation	Expanded Version
ABSP_ANTP	Acme Bhiwadi Solar Power Private Limited, Anantpur
ACBIL	ACB ( India) Limited
ACP	Area Clearing Price
ACV	Area Clearing Volume
ACME_SLR	ACME Solar Power Project
ACME_RUMS	Acme Rewa Ultra Mega Solar Project
ADY1_PVGD	Adyah Solar Energy Pvt Ltd., Block 1 Pavagada Solar Park
ADY13_PVGD	Adyah Solar Energy Pvt Ltd., Block 13 Pavagada Solar Park
ADY2_PVGD	Adyah Solar Energy Pvt Ltd., Block 2 Pavagada Solar Park
AGEMPL BHUJ	Adani Green Energy (MP) Ltd., Bhuj
AHSP_ANTP	Acme Hisar Solar Power Private Limited, Anantpur
AKS_PVGD	ACME Kurukshetra Solar Energy Pvt. Ltd
AKSP_ANTP	Acme Karnal Solar Power Private Limited, Anantpur
ARINSUM_RUMS	Solenergi Rewa Ultra Mega Solar Project
ARS_PVGD	ACME REWARI Solar Power Pvt Ltd.
AVAADA_PVGD	Avaada Solar Energy Private Ltd., Pavagada
AZURE_ANTP	Azure Power, Anantpur
AZURE_SLR	Azure Power Solar Power Project
AZURE34_SLR	Azure Power 34 Pvt. Ltd. Solar Power Project
BALCO	Bharat Aluminum Company Limited
BARC	Bhabha Atomic Research Centre
BBMB	Bhakra Beas Management Board
BETAM_TCN	Betam Wind Energy Private Limited, Tuticorin
BHADRAVATHI HVDC	Bhadravathi High Voltage Direct Current Link
BRBCL	Bhartiya Rail Bijlee Company Limited
CEA	Central Electricity Authority
CERC	Central Electricity Regulatory Commission
CGPL	Coastal Gujarat Power Limited
CHUKHA HEP	Chhukha Hydroelectric Project, Bhutan
CHUZACHEN HEP	Chuzachen Hydro Electric Power Project
CLEAN_SLR	Clean Solar Power Pvt. Ltd
COASTGEN	Coastal Energen Private Limited
DAGACHU	Dagachhu Hydro Power Corporation
DB POWER	Diligent Power Pvt. Ltd.
DCPP	Donga Mahua Captive Power Plant
DGEN MEGA POWER	DGEN Mega Power Project
DHARIWAL POWER	Dhariwal Power Station
DIKCHU HEP	Dikchu Hydro-electric Project, Sikkim
DOYANG HEP	Doyang Hydro Electric Project
DSM	Deviation Settlement Mechanism
DVC	Damodar Valley Corporation
EMCO	EMCO Energy Limited
ESSAR POWER	Essar Power Limited
ESSAR STEEL	Essar Steel Ltd
FORTUM_PVGD	Fortum Finnsurya Energy Private Ltd, Pavagada
FRV_ANTP	Fotowatio Renewable Ventures, Anantapur
FRV_NPK	Fotowatio Renewable Ventures, NP Kunta
GIWEL_BHUJ	Green infra wind energy Limited, Bhuj

GIWEL_TCN	Green Infra Wind Energy Limited,Tuticorin
GMR CHHATTISGARH	GMR Chhattisgarh Energy Limited
GMR KAMALANGA	GMR Kamalanga Energy Ltd.
HVDC ALPD	Alipurduar High Voltage Direct Current Link
HVDC CHAMPA	Champa-Kurukshetra High Voltage Direct Current Link
HVDC PUS	Pasauli High Voltage Direct Current Link
IEX	Indian Energy Exchange Limited
IGSTPS	Indira Gandhi Super Thermal Power Station Jhajjar
IL&FS	Infrastructure Leasing & Financial Services Limited
INOX_BHUJ	INOX Wind Limited, Bhuj, Gujarat
J&K	Jammu & Kashmir
JAYPEE NIGRIE	Jaypee Nigrie Super Thermal Power Project
JHABUA POWER MP	Jhabua Thermal Power Project
JINDAL POWER	Jindal Power Limited
JINDAL STAGE-II	Jindal Power Ltd Stage II
JITPL	Jindal India Thermal Power Ltd.
JORETHANG	Jorethang Loop Hydroelectric Power Project
KAPP 3&4	Kakrapar Atomic Power Station Unit 3 & 4
KARCHAM WANGTOO	Karcham Wangtoo H.E. Project
KORBA WEST POWER	Korba West Power Company Limited
KOTESHWAR	Koteshwar Hydro Power project
KSK MAHANADI	KSK Mahanadi Power Ltd
KURICHU HEP	Kurichhu Hydro-electric Power Station, Bhutan
LANKO_AMK	Lanco Amarkantak Power Private Limited
LANKO BUDHIL	Lanco Budhil Hydro Power Private Limited
LANKO KONDAPALLY	Lanco Kondapally Power Private Limited
LOKTAK	Loktak Power Project
MAHINDRA_RUMS	Mahindra Rewa Ultra Mega Solar Project
MAHOBASLR	Mahoba Solar Power Project
MALANA	Malana Hydroelectric Plant
MANGDECHU HEP	Mangdechhu Hydroelectric Project, Mangdechhu River, Bhutan
Maruti Coal	Maruti Clean Coal and Power Limited
MB POWER	MB Power Ltd
MEENAKSHI	Meenakshi Energy Private Limited
MP	Madhya Pradesh
MTPS II	Muzaffarpur Thermal Power Station – Stage II
MYTRAH_TCN	Mytrah Energy (India) Private Limited, Tuticorin
MUs	Million Units
NAPP	Narora Atomic Power Plant
NEEPCO	North Eastern Electric Power Corporation Limited
NEP	Nepal
NFL	National Fertilisers Limited
NHPC STATIONS	National Hydro Electric Power Corporation Ltd. Stations
NJPC	Nathpa Jhakri Hydroelectric Power Station
NLC	Neyveli Lignite Corporation Limited
NLDC	National Load Dispatch Centre
NPGC	Nabinagar Power Generating Company (Pvt.) Limited
NSPCL	NTPC - SAIL Power Company Private Limited
NTECL Vallur	NTPC Tamil Nadu Energy Company Limited Vallur
NTPC_ANTP	NTPC Anantapur

NTPC STATIONS	National Thermal Power Corporation Ltd. Stations
NTPL	NLC Tamil Nadu Power Limited
NVVN	NTPC Vidyut Vyapar Nigam Limited
ONGC Platana	ONGC Tripura Power Company
OPGC	Odisha Power Generation Corporation
ORANGE_TCN	Orange Renewable Power Pvt. Ltd, Tuticorin
OSTRO	Ostro Energy Private Limited
OTC	Over The Counter
PARAM_PVGD	Parampujya Solar Energy Private Ltd
PARE HEP	Pare hydroelectric project, Arunachal Pradesh
PX	Power Exchange
PXIL	Power Exchange India Limited
RAIL	Indian Railways
RAMPUR HEP	Rampur Hydro Electric Power Project
RANGIT HEP	Rangit Hydroelectric power project
RANGANADI HEP	Ranganadi Hydro Electric Power Project, Arunachal Pradesh
RAP-B	Rajasthan Atomic Power Plant-B
RAP-C	Rajasthan Atomic Power Plant-C
REC	Renewable Energy Certificate
REGL	Raigarh Energy Generation Limited
RENEW_BHACHAU	ReNew Power Limited, Bhachau
RENEW_PVGD	ReNew Wind Energy (TN2) Private Limited
RENEW_SLR	Renew Solar
RENEW_SLR_BKN	Renew Solar Bikaner
RGPPL	Ratnagiri Gas and Power Private Limited
RLDC	Regional Load Dispatch Centre
RTC	Round The Clock
Sasan UMPP	Sasan Ultra Mega Power Project
SB_SLR	Soft Bank Solar
SBG CLEANTECH_SLR	SBG Cleantech Ltd
SBG_NPK	SB Energy Solar Private Limited, NP Kunta
SBG_PVGD	SB Energy Solar Private Limited, Pavagada
SEMBCORP	Sembcorp Gayatri Power Ltd
SHREE CEMENT	Shree Cement Limited
SIMHAPURI	Simhapuri Energy Private Limited
SKS Power	SKS Power Generation Chhattisgarh Limited
SPECTRUM	Spectrum Power Generation Ltd
TALA HEP	Tala Hydroelectric Project, Bhutan
TASHIDENG HEP	Tashiding Hydro Electric Project, Sikkim
TATA_ANTP	TATA Power Anantapur
TATA_PVGD	Tata Power Renewable Energy Ltd
TATA_SLR	Tata Solar
TEESTA STG3	Teesta Stage 3 Hydro Power Project
TEHRI	Tehri Hydro Electric Power Project
THERMAL POWERTECH	Thermal Powertech Corporation India Limited
URI-II	Uri-II Hydropower Project
VINDHYACHAL HVDC	Vindhyachal High Voltage Direct Current Link
YARROW_PVGD	Yarrow Infra Structure Private Ltd

## Introduction

A well-functioning electricity market requires an effective market monitoring process. As part of the market monitoring process, the monthly report on short-term transactions of electricity, is being prepared and posted on the website of CERC since August 2008. Here, “short-term transactions of electricity” refers to the contracts of less than one year period, for electricity transacted (inter-State) through inter-State Trading Licensees and directly by the Distribution Licensees, Power Exchanges (Indian Energy Exchange Ltd (IEX) and Power Exchange India Ltd (PXIL), and Deviation Settlement Mechanism (DSM). The objectives of the report are: (i) to observe the trends in volume and price of the short-term transactions of electricity; (ii) to analyse competition among the market players; (iii) to analyse effect of congestion on volume of electricity transacted through power exchanges; (iv) to analyse bilateral contracts executed by traders; (v) to provide information on volume and price of Renewable Energy Certificates (RECs) transacted through power exchanges; and (vi) to disclose/disseminate all relevant market information. The details of the report for the month of **February, 2020** are as under:

### I: Volume of Short-term Transactions of Electricity

During February 2020, total electricity generation excluding generation from renewable and captive power plants in India was 101129.16 MUs (Table-1).

Of the total electricity generation, 9373.64 MUs (9.27%) was transacted through short-term, comprising of 4289.43 MUs (4.24%) through day ahead collective transactions on power exchanges followed by 3463.12 MUs (3.42%) through bilateral (through traders and term-ahead contracts on power exchanges and directly between distribution companies), and 1621.09 MUs (1.60%) through DSM (Table-1 & Figure-2).

Of the total short-term transactions, day ahead collective transactions on power exchanges constitutes 45.76%, followed by 36.95% through bilateral (21.09% through traders and term-ahead contracts on power exchanges and 15.85% directly between distribution companies) and 17.29% through DSM (Table-1 & Figure-1). Daily volume of short-term transactions is shown in Table-17 & Figure-3.

The percentage share of electricity traded by each trading licensee in the total volume of electricity traded by all the trading licensees is provided in Table-2 & Figure-4. The volume of electricity transacted by the trading licensees includes bilateral transactions and the transactions undertaken through power exchanges. There were 35 trading licensees as on February 2020. In February 2020, 24 trading licensees were engaged in short term trading. Top 5 trading licensees had a share of 71.19% in the total volume traded by all the licensees. These are PTC India Ltd., Adani Enterprises Ltd., Kreate Energy (I) Pvt. Ltd., Tata Power Trading Company (P) Ltd. and Manikaran Power Ltd.

Herfindahl-Hirschman Index (HHI) has been used for measuring the competition among the trading licensees. Increase in the HHI generally indicates decrease in competition and increase of market concentration, and vice versa. The HHI below 0.15 indicates non-concentration, HHI between 0.15 and 0.25 indicates moderate concentration and HHI above 0.25 indicates high concentration. The HHI has been computed based on the volume of electricity traded (inter-State & intra-State) by inter-State trading licensees, and it was 0.1320 for the month of February 2020, which indicates non-concentration of market power (Table-2).

The volume of electricity transacted through IEX and PXIL in the day ahead market was 4289.15 MUs and 0.28 MUs respectively. The volume of total buy bids and sell bids was 5233.37 MUs and 10371.51 MUs respectively in IEX while the same was 2.41 MUs and 54.50 MUs respectively in PXIL. The variation in the volume of buy bids and sell bids placed through power exchanges shows variation in the demand and supply position.

The volume of electricity transacted through IEX and PXIL in the term-ahead market was 226.48 MUs and 29.47 MUs respectively (Table-6 & Table-7).

## **II: Price of Short-term Transactions of Electricity**

(i) *Price of electricity transacted through Traders:* The minimum, maximum and weighted average sale prices have been computed for the electricity transacted through traders and the sale prices were ₹2.93/kWh, ₹5.12/kWh and ₹4.20/kWh respectively (Table-3). The weighted average sale prices were also computed for the transactions during Round the Clock (RTC) and Off-peak periods separately, and the sale prices were ₹4.23/kWh



and ₹4.16/kWh respectively. There were no transactions by traders during Peak periods in the month of February 2020 (Table-4).

**(ii) Price of electricity transacted through Power Exchanges:** The minimum, maximum and weighted average prices have been computed for the electricity transacted through IEX and PXIL. The minimum, maximum and weighted average prices were ₹1.00/kWh, ₹5.00/kWh and ₹3.02/kWh respectively in IEX and these were ₹2.57/kWh, ₹3.65/kWh and ₹3.14/kWh respectively in PXIL (Table-5).

The price of electricity transacted through IEX and PXIL in the term-ahead market was ₹3.69/kWh and ₹3.36/kWh respectively (Table-6 and Table-7).

**(iii) Price of electricity transacted through DSM:** The average deviation settlement price was ₹3.00/kWh. The minimum and maximum deviation settlement prices were ₹0.00/kWh and ₹8.00/kWh respectively (Table-8).

The prices of electricity transacted through trading licensees, power exchanges and DSM and their comparison is shown in Table-18, Figure-5 & 6.

### **III: Trading Margin**

As per the CERC (Procedure, Terms and Conditions for grant of trading licence and other related matters) Regulations 2020, the trading licensees are allowed to charge trading margin of not less than 0 paise/kWh and upto 7 paise/kWh. The weighted average trading margin charged by the trading licensees for bilateral transactions during the month was ₹0.032/kWh.

### **IV: Volume of Short-term Transactions of Electricity (Regional Entity<sup>1</sup>-Wise)**

Of the total bilateral transactions, top 5 regional entities sold 41.94% of the volume, and these were Delhi, Thermal Powertech Corporation India Ltd., GMR Chhattisgarh Energy Ltd., RKM Power and Uttar Pradesh. Top 5 regional entities purchased 45.84% of the volume,

---

<sup>1</sup> In case of a state, the entities which are “selling” also include generators connected to state grid and the entities which are “buying” also include open access consumers.

and these were Himachal Pradesh, Tamil Nadu, Rajasthan, Andhra Pradesh and Gujarat (Table-9 & 10).

Of the total power exchange transactions, top 5 regional entities sold 35.89% of the volume, and these were Gujarat, Sembcorp Gayatri Power Ltd., Odisha, Madhya Pradesh, and Jindal India Thermal Power Ltd. Top 5 regional entities purchased 56.25% of the volume, and these were Telangana, Gujarat, Maharashtra, Jammu & Kashmir and Tamil Nadu (Table-11 & 12).

Of the total DSM transactions, top 5 regional entities under drew 24.95% of the volume, and these were NTPC Station (Western Region), Madhya Pradesh, Maharashtra, Neyveli Lignite Corporation Limited and Punjab (Table-13). Top 5 regional entities overdrew 24.52% of the volume, and these were Uttar Pradesh, Tamil Nadu, Rajasthan, NTPC Station (Northern Region) and Gujarat (Table-14).

Regional entity-wise total volume of net short-term transactions of electricity i.e. volume of net transactions through bilateral, power exchanges and DSM is shown in Table-15 & 19. Top 5 electricity selling regional entities were Thermal Powertech Corporation India Ltd., GMR Chhattisgarh Energy Limited, Delhi, Odisha and Sembcorp Gayatri Power Ltd. Top 5 electricity purchasing regional entities were Telangana, Tamil Nadu, Andhra Pradesh, Himachal Pradesh and Jammu & Kashmir.

## **V: Congestion<sup>2</sup> on Inter-State Transmission Corridor for Day-Ahead Market on Power Exchanges**

Power Exchanges use a price discovery mechanism in which the aggregate demand and supply are matched to arrive at an unconstrained market price and volume. This step assumes that there is no congestion in the inter-State transmission system between different regions. However, in reality, the system operator (NLDC) in coordination with RLDCs limits the flow

---

<sup>2</sup> “Congestion” means a situation where the demand for transmission capacity exceeds the available transfer capability

(due to congestion) in the inter-State transmission system. In such a situation, power exchanges adopt a mechanism called “Market Splitting”<sup>3</sup>.

In the month of February 2020, congestion only occurred in IEX. The details of congestion are shown in Table-16. The volume of electricity that could not be cleared due to congestion & other reasons and could not be transacted through power exchanges is the difference between unconstrained cleared volume and actual cleared volume.

During the month, the volume of electricity that could not be cleared in IEX due to congestion was 0.05% of the unconstrained cleared volume. In terms of time, congestion occurred was 0.22% in IEX (Table-16).

## **VI: Volume and Price of Renewable Energy Certificates (RECs)**

The concept of Renewable Energy Certificates (RECs) seeks to address mismatch between availability of renewable energy and the requirement of the obligated entities to meet their renewable purchase obligation by purchasing green attributes of renewable energy remotely located in the form of RECs. The REC mechanism is a market based instrument, to promote renewable sources of energy and development of electricity market.

One REC is equivalent to 1 MWh electricity injected into the grid from renewable energy sources. The REC is exchanged only in the power exchanges approved by CERC within the band of a floor price and forbearance (ceiling) price as notified by CERC from time to time. The first REC trading was held on power exchanges in May, 2011.

The details of REC transactions for the month of February, 2020 are shown in Table-20. The market clearing volume of solar RECs transacted on IEX and PXIL were 984157 and 315580 respectively and the weighted average market clearing price of these RECs was

---

<sup>3</sup>“ Market Splitting” is a mechanism adopted by Power Exchange where the market is split in the event of transmission congestion, into predetermined (by NLDC) bid areas or zones, which are cleared individually at their respective area prices such that the energy balance in every bid area is reached based upon the demand and supply in individual bid areas and using the available transmission corridor capacity between various bid areas simultaneously”  
As a result of this market splitting the price of electricity in the importing region, where demand for electricity is more than supply, becomes relatively higher than the price of electricity in the exporting region.

₹2400/MWh in IEX and ₹2400/MWh in PXIL. Market clearing volume of non-solar RECs transacted on IEX and PXIL were 507153 and 335520 respectively and the weighted average market clearing price of these RECs was ₹ 1800/MWh in IEX and ₹ 2050/MWh in PXIL.

The gap between the volume of buy and sell bids of RECs placed through power exchanges shows about the variation in demand for both solar and non-solar RECs. For Solar RECs, the ratio of buy bids to sell bids was 1.08 and 1.10 in IEX and PXIL respectively. For non-solar RECs, the ratio of buy bids to sell bids was 0.24 and 0.59 in IEX and PXIL respectively.

## VII: Inferences:

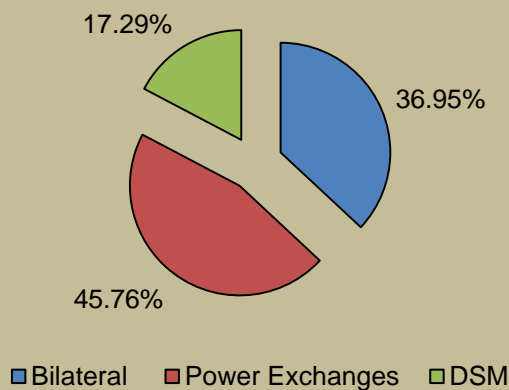
- The percentage of short-term transactions of electricity to total electricity generation was 9.27%.
- Of the total short-term transactions, day ahead collective transactions on power exchanges constitutes 45.76%, followed by 36.95% through bilateral (21.09% through traders and term-ahead contracts on power exchanges and 15.85% directly between distribution companies) and 17.29% through DSM.
- Top 5 trading licensees had a share of 71.19% in the total volume traded by all the trading licensees.
- The Herfindahl Hirschman Index computed for the volume of electricity traded by trading licensees was 0.1320, indicating non-concentration of market power.
- The weighted average price of electricity transacted through trading licensees was ₹4.20/kWh. The weighted average price of electricity transacted through IEX and PXIL were ₹3.02/kWh and ₹3.14/kWh respectively.
- The average price of electricity transacted through DSM was ₹3.00/kWh.
- The weighted average trading margin charged by the trading licensees for bilateral transactions during the month was ₹0.032/kWh. The trading margin charged during the month was in line with the Trading Margin regulations.
- Top 5 electricity selling regional entities were Thermal Powertech Corporation India Ltd., GMR Chhattisgarh Energy Limited, Delhi, Odisha and Sembcorp Gayatri Power Ltd. Top 5 electricity purchasing regional entities were Telangana, Tamil Nadu, Andhra Pradesh, Himachal Pradesh and Jammu & Kashmir.
- During the month of February 2020, the volume of electricity that could not be cleared in IEX due to congestion was 0.05% of the unconstrained cleared volume. In terms of time, congestion occurred was 0.22% in IEX. PXIL did not witness any congestion.

- The market clearing volume of solar RECs transacted on IEX and PXIL were 984157 and 315580 respectively and the weighted average market clearing price of these RECs was ₹2400/MWh in IEX and ₹2400/MWh in PXIL. Market clearing volume of non-solar RECs transacted on IEX and PXIL were 507153 and 335520 respectively and the weighted average market clearing price of these RECs was ₹1800/MWh in IEX and ₹2050/MWh in PXIL.

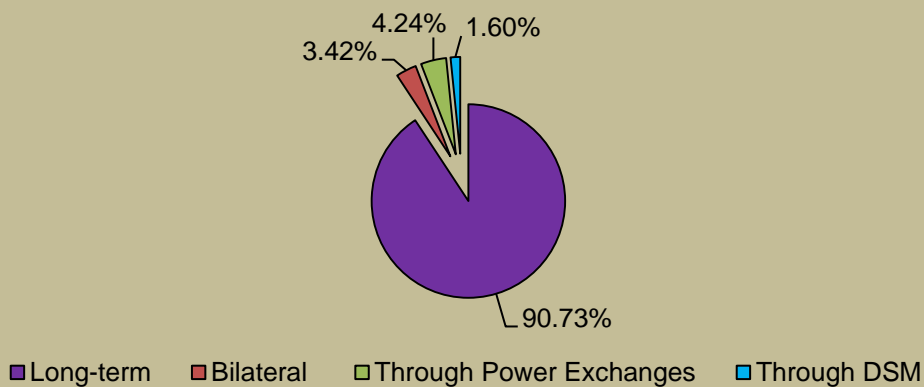
<b>Table-1: VOLUME OF SHORT-TERM TRANSACTIONS OF ELECTRICITY (ALL INDIA), FEBRUARY 2020</b>				
<b>Sr. No</b>	<b>Short-term transactions</b>	<b>Volume (MUs)</b>	<b>% to Volume of short-term transactions</b>	<b>% to Total Generation</b>
1	Bilateral	3463.12	36.95	3.42
	(i) Through Traders and PXs	1977.04	21.09	1.95
	(ii) Direct	1486.08	15.85	1.47
2	Through Power Exchanges	4289.43	45.76	4.24
	(i) IEX	4289.15	45.76	4.24
	(ii) PXIL	0.28	0.003	0.0003
3	Through DSM	1621.09	17.29	1.60
	<b>Total</b>	<b>9373.64</b>	<b>-</b>	<b>9.27</b>
	<b>Total Generation</b>	<b>101129.16</b>	<b>-</b>	<b>-</b>

Source: NLDC

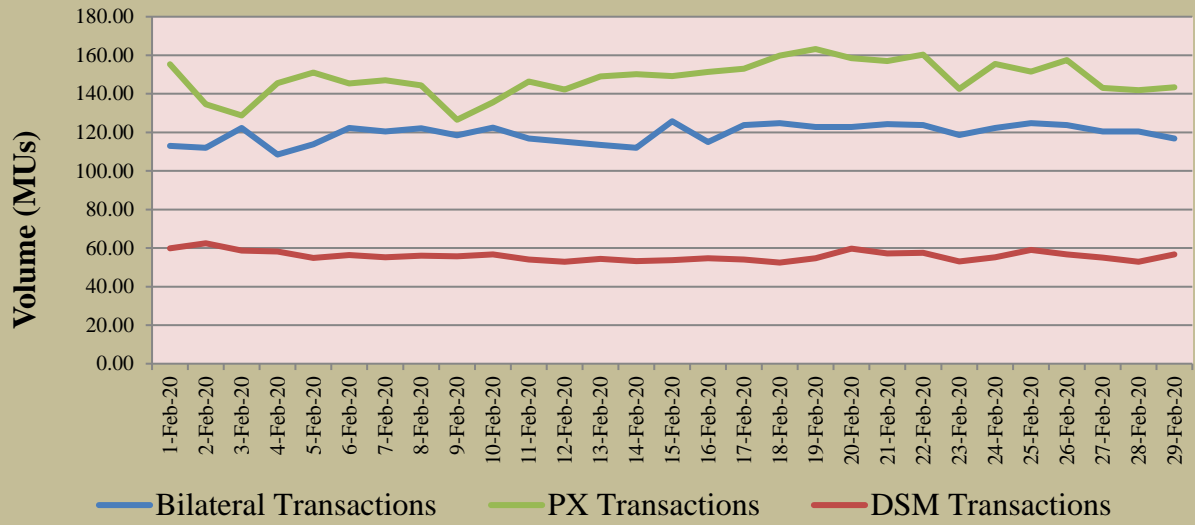
**Figure-1: Volume of Short-term Transactions of Electricity, February 2020**



**Figure-2: Volume of Various Kinds of Electricity Transactions in Total Electricity Generation, February 2020**



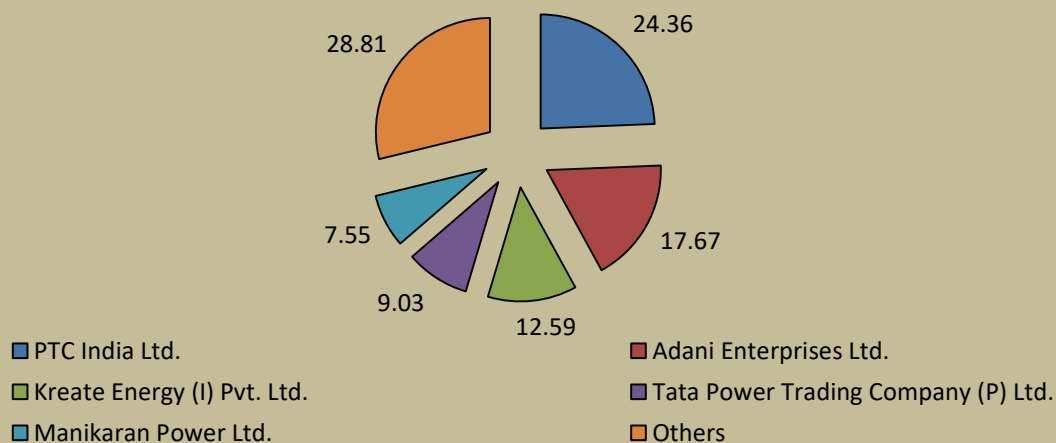
**Figure-3: Volume of Short-term Transactions of Electricity, February 2020 (Day-wise)**





<b>Table-2: PERCENTAGE SHARE OF ELECTRICITY TRANSACTED BY TRADING LICENSEES, FEBRUARY 2020</b>			
<b>Sr.No</b>	<b>Name of the Trading Licensee</b>	<b>% Share in total Volume transacted by Trading Licensees</b>	<b>Herfindahl-Hirschman Index</b>
1	PTC India Ltd.	24.36	0.0593
2	Adani Enterprises Ltd.	17.67	0.0312
3	Kreate Energy (I) Pvt. Ltd.	12.59	0.0159
4	Tata Power Trading Company (P) Ltd.	9.03	0.0082
5	Manikaran Power Ltd.	7.55	0.0057
6	Arunachal Pradesh Power Corporation (P) ltd	7.54	0.0057
7	NHPC Limited	5.51	0.0030
8	GMR Energy Trading Ltd.	3.46	0.0012
9	Knowledge Infrastructure Systems (P) Ltd	2.43	0.0006
10	Jaiprakash Associates Ltd.	2.09	0.0004
11	NTPC Vidyut Vyapar Nigam Ltd.	1.82	0.0003
12	Instinct Infra & Power Ltd.	1.19	0.0001
13	National Energy Trading & Services Ltd.	1.00	0.0001
14	Essar Electric Power Development Corp. Ltd.	0.86	0.0001
15	RPG Power Trading Company Ltd.	0.71	0.0000
16	JSW Power Trading Company Ltd	0.67	0.0000
17	Gita Power & Infrastructure Private Limited	0.41	0.0000
18	Shree Cement Ltd.	0.32	0.0000
19	Abja Power Private Limited	0.30	0.0000
20	Statkraft Markets Pvt. Ltd.	0.25	0.0000
21	Customized Energy Solutions India (P) Ltd.	0.11	0.0000
22	NLC India Ltd.	0.06	0.0000
23	Phillip Commodities India (P) Ltd.	0.05	0.0000
24	IPCL Power Trading Pvt. Ltd.	0.04	0.0000
<b>TOTAL</b>		<b>100.00%</b>	<b>0.1320</b>
<b>Top 5 trading licensees</b>		<b>71.19%</b>	
<i>Note 1: Volume of electricity transacted by the trading licensees includes bilateral transactions (inter-state &amp; intra-state) and the transactions undertaken through power exchanges.</i>			
<i>Note 2: Volume of electricity transacted by Global Energy Ltd is not included.</i>			
<i>Source: Information submitted by trading licensees</i>			

**Figure 4: Percentage Share of Electricity Transacted by Trading Licensees, February 2020**



<b>Table-3: PRICE OF ELECTRICITY TRANSACTED THROUGH TRADERS, FEBRUARY 2020</b>		
<b>Sr.No</b>	<b>Item</b>	<b>Sale Price of Traders (₹/kWh)</b>
1	Minimum	2.93
2	Maximum	5.12
3	Weighted Average	4.20

Source: Information submitted by trading licensees

<b>Table-4: PRICE OF ELECTRICITY TRANSACTED THROUGH TRADERS (TIME-WISE), FEBRUARY 2020</b>		
<b>Sr.No</b>	<b>Period of Trade</b>	<b>Sale Price of Traders (₹/kWh)</b>
1	RTC	4.23
2	PEAK	-
3	OFF PEAK	4.16

Source: Information submitted by trading licensees

<b>Table-5: PRICE OF ELECTRICITY TRANSACTED THROUGH POWER EXCHANGES, FEBRUARY 2020</b>			
<b>Sr.No</b>	<b>ACP</b>	<b>Price in IEX (₹/kWh)</b>	<b>Price in PXIL (₹/kWh)</b>
1	Minimum	1.00	2.57
2	Maximum	5.00	3.65
3	Weighted Average	3.02	3.14

Source: Information submitted by IEX and PXIL

<b>Table-6: VOLUME AND PRICE OF ELECTRICITY IN TERM AHEAD MARKET OF IEX, FEBRUARY 2020</b>			
<b>Sr.No</b>	<b>Term ahead contracts</b>	<b>Actual Scheduled Volume (MUs)</b>	<b>Weighted Average Price (₹/kWh)</b>
1	Intra-Day Contracts	52.63	3.78
2	Day Ahead Contingency Contracts	42.33	3.10
3	Daily Contracts	131.52	3.85
	<b>Total</b>	<b>226.48</b>	<b>3.69</b>

Source: IEX

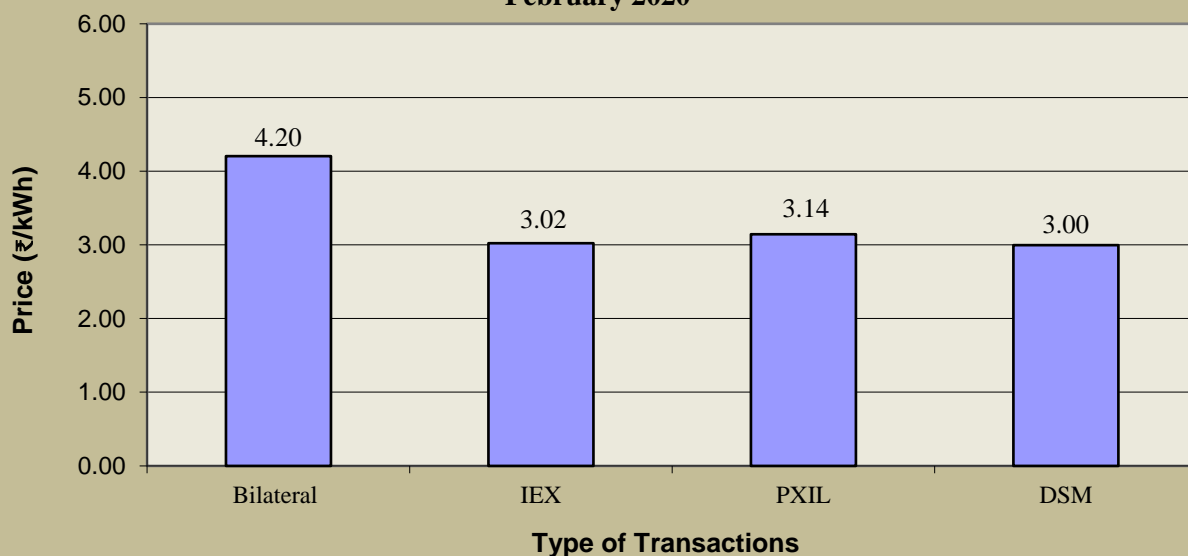
<b>Table-7: VOLUME AND PRICE OF ELECTRICITY IN TERM AHEAD MARKET OF PXIL, FEBRUARY 2020</b>			
<b>Sr.No</b>	<b>Term ahead contracts</b>	<b>Actual Scheduled Volume (MUs)</b>	<b>Weighted Average Price (₹/kWh)</b>
1	Intra-Day Contracts	18.63	3.58
2	Any Day(s) Contracts	10.46	2.98
3	Day Ahead Contingency Contracts	0.38	2.97
	<b>Total</b>	<b>29.47</b>	<b>3.36</b>

Source: PXIL

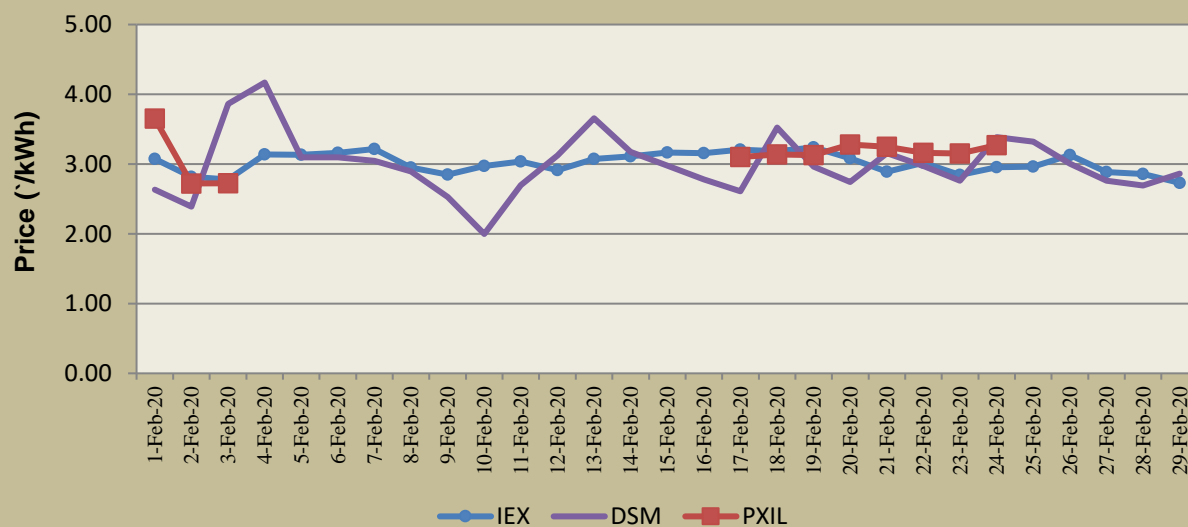
<b>Table-8: PRICE OF ELECTRICITY TRANSACTED THROUGH DSM, FEBRUARY 2020</b>		
<b>Sr.No</b>	<b>Item</b>	<b>Price in All India Grid (₹/kWh)</b>
1	Minimum	0.00
2	Maximum	8.00
3	Average	3.00

Source: NLDC

**Figure-5: Price of Short-term Transactions of Electricity, February 2020**



**Figure-6: Price of Short-term Transactions of Electricity, February 2020 (Day-wise)**



*Note: In PXIL, transactions were recorded on 1<sup>st</sup>- 3<sup>rd</sup> and 17<sup>th</sup>- 24<sup>th</sup> February 2020 only.*

<b>Table-9: VOLUME OF ELECTRICITY SOLD THROUGH BILATERAL, FEBRUARY 2020</b>		
<b>Name of the Entity</b>	<b>Volume of Sale (MUs)</b>	<b>% of Volume</b>
DELHI	402.14	11.45
THERMAL POWERTECH	316.63	9.01
GMR CHATTISGARH	307.25	8.75
RKM POWER	225.31	6.41
UTTAR PRADESH	221.65	6.31
HARYANA	196.75	5.60
WEST BENGAL	188.96	5.38
ESSAR POWER	160.67	4.57
BIHAR	146.79	4.18
DVC	137.98	3.93
SHREE CEMENT	134.52	3.83
GUJARAT	120.06	3.42
ADHUNIK POWER LTD	113.66	3.24
ODISHA	102.09	2.91
DB POWER	86.75	2.47
PUNJAB	82.91	2.36
MAHARASHTRA	81.72	2.33
JITPL	76.54	2.18
IL&FS	74.82	2.13
RAJASTHAN	58.64	1.67
MP	42.03	1.20
GMR KAMALANGA	34.80	0.99
KARNATAKA	31.85	0.91
J & K	25.03	0.71
SKS POWER	21.14	0.60
ONGC PALATANA	19.64	0.56
ANDHRA PRADESH	14.36	0.41
DAGACHU	14.16	0.40
REGL	12.56	0.36
BALCO	11.03	0.31
TELANGANA	10.88	0.31
HIMACHAL PRADESH	9.84	0.28
TAMIL NADU	4.98	0.14
LANKO_AMK	4.96	0.14
JHABUA POWER_MP	3.75	0.11
CHUZACHEN HEP	3.46	0.10
JAYPEE NIGRIE	2.94	0.08
NTPC STATIONS-NER	2.74	0.08
MEGHALAYA	2.14	0.06
MB POWER	1.51	0.04
ACBIL	1.06	0.03
NTPC STATIONS-ER	0.77	0.02
DGEN MEGA POWER	0.40	0.01
NTPC STATIONS-NR	0.40	0.01
<b>Total</b>	<b>3512.27</b>	<b>100.00</b>
<b>Volume Sold by top 5 Regional Entities</b>	<b>1472.98</b>	<b>41.94</b>

<b>Table-10: VOLUME OF ELECTRICITY PURCHASED THROUGH BILATERAL, FEBRUARY 2020</b>		
<b>Name of the Entity</b>	<b>Volume of Purchase (MUs)</b>	<b>% of Volume</b>
HIMACHAL PRADESH	460.54	13.30
TAMIL NADU	378.00	10.92
RAJASTHAN	273.43	7.90
ANDHRA PRADESH	254.09	7.34
GUJARAT	221.51	6.40
UTTARAKHAND	194.96	5.63
TELANGANA	185.18	5.35
BIHAR	181.56	5.24
JORETHANG	172.08	4.97
ESSAR STEEL	158.18	4.57
WEST BENGAL	151.55	4.38
MP	140.59	4.06
JHARKHAND	117.59	3.40
MEGHALAYA	84.28	2.43
MANIPUR	81.51	2.35
KERALA	80.52	2.33
MAHARASHTRA	58.85	1.70
CHHATTISGARH	51.54	1.49
ASSAM	43.86	1.27
GOA	39.79	1.15
DELHI	32.49	0.94
UTTAR PRADESH	26.24	0.76
HARYANA	21.15	0.61
ARUNACHAL PRADESH	18.34	0.53
ODISHA	11.93	0.34
NAGALAND	11.89	0.34
SIKKIM	5.58	0.16
NEPAL(NVVN)	5.21	0.15
KARNATAKA	0.44	0.01
DADRA & NAGAR HAVELI	0.15	0.004
PUNJAB	0.10	0.003
<b>TOTAL</b>	<b>3463.12</b>	<b>100.00</b>
<b>Volume Purchased by top 5 Regional Entities</b>	<b>1587.57</b>	<b>45.84</b>

<b>Table-11: VOLUME OF ELECTRICITY SOLD THROUGH POWER EXCHANGES, FEBRUARY 2020</b>		
<b>Name of the Entity</b>	<b>Volume of Sale (MUs)</b>	<b>% of Volume</b>
GUJARAT	586.80	13.68
SEBPCORP	281.85	6.57
ODISHA	238.01	5.55
MP	228.20	5.32
JITPL	204.78	4.77
UTTAR PRADESH	186.98	4.36
DB POWER	172.62	4.02
HIMACHAL PRADESH	147.43	3.44
RAJASTHAN	140.71	3.28
JAYPEE NIGRIE	110.51	2.58
NLC	110.33	2.57
JINDAL POWER	105.32	2.46
TEESTA STG3	103.71	2.42
GMR CHATTISGARH	101.92	2.38
ASSAM	100.58	2.34
MB POWER	98.58	2.30
DELHI	97.96	2.28
THERMAL POWERTECH	97.42	2.27
DGEN MEGA POWER	91.82	2.14
CHHATTISGARH	86.29	2.01
SKS POWER	84.10	1.96
JINDAL STAGE-II	83.17	1.94
REGL	81.51	1.90
BIHAR	59.54	1.39
SPECTRUM	55.62	1.30
KARNATAKA	52.55	1.23
ESSAR POWER	47.00	1.10
HARYANA	42.84	1.00
MARUTI COAL	42.46	0.99
TRIPURA	34.05	0.79
UTTARAKHAND	30.80	0.72
JHABUA POWER_MP	29.58	0.69
MANIPUR	29.54	0.69
ACBIL	28.57	0.67
WEST BENGAL	26.37	0.61
MAHARASHTRA	22.49	0.52
GOA	21.95	0.51
NTPC STATIONS-WR	20.06	0.47
JHARKHAND	16.86	0.39
TELANGANA	15.89	0.37
CHANDIGARH	15.78	0.37
IL&FS	14.74	0.34
ANDHRA PRADESH	13.43	0.31
KARCHAM WANGTOO	11.86	0.28
AD HYDRO	11.46	0.27
TAMIL NADU	11.02	0.26
SAINJ HEP	10.32	0.24
NTPC STATIONS-SR	9.14	0.21
NTPC STATIONS-ER	8.96	0.21

JORETHANG	8.80	0.21
TASHIDENG HEP	8.41	0.20
SIKKIM	5.24	0.12
MIZORAM	4.91	0.11
DIKCHU HEP	4.60	0.11
NTPC STATIONS-NR	3.98	0.09
NTPC STATIONS-NER	3.70	0.09
DVC	3.65	0.08
EMCO	3.46	0.08
NTPL	3.40	0.08
GMR KAMALANGA	3.39	0.08
NJPC	3.02	0.07
KERALA	2.86	0.07
SHREE CEMENT	1.62	0.04
ONGC PALATANA	1.19	0.03
ARUNACHAL PRADESH	0.78	0.02
LANCO BUDHIL	0.57	0.01
CHUZACHEN HEP	0.53	0.01
RGPPL (DABHOL)	0.50	0.01
J & K	0.45	0.01
ADHUNIK POWER LTD	0.35	0.01
BALCO	0.31	0.01
DHARIWAL POWER	0.19	0.005
DADRA & NAGAR HAVELI	0.02	0.0004
BRBCL,NABINAGAR	0.01	0.0003
<b>Total</b>	<b>4289.43</b>	<b>100.00</b>
<b>Volume sold by top 5 Regional Entities</b>	<b>1539.64</b>	<b>35.89</b>

<b>Table-12: VOLUME OF ELECTRICITY PURCHASED THROUGH POWER EXCHANGES, FEBRUARY 2020</b>		
<b>Name of the Entity</b>	<b>Volume of Purchase (MUs)</b>	<b>% of Volume</b>
TELANGANA	950.33	22.16
GUJARAT	411.56	9.59
MAHARASHTRA	364.30	8.49
J & K	347.70	8.11
TAMIL NADU	338.80	7.90
RAJASTHAN	204.01	4.76
ANDHRA PRADESH	188.55	4.40
BIHAR	174.00	4.06
DELHI	173.60	4.05
PUNJAB	169.70	3.96
HARYANA	164.73	3.84
UTTAR PRADESH	105.06	2.45
KARNATAKA	96.05	2.24
ESSAR STEEL	80.65	1.88
CHHATTISGARH	71.66	1.67
WEST BENGAL	71.57	1.67
JHARKHAND	50.08	1.17
ASSAM	49.94	1.16
UTTARAKHAND	48.03	1.12
KERALA	43.54	1.02
DAMAN AND DIU	40.68	0.95
DADRA & NAGAR HAVELI	38.71	0.90
ODISHA	37.83	0.88
MEGHALAYA	25.71	0.60
HIMACHAL PRADESH	20.95	0.49
GOA	11.06	0.26
MP	6.64	0.15
CHANDIGARH	2.77	0.06
TRIPURA	1.19	0.03
<b>TOTAL</b>	<b>4289.43</b>	<b>100.00</b>
<b>Volume purchased by top 5 Regional Entities</b>	<b>2412.69</b>	<b>56.25</b>



<b>Table-13: VOLUME OF ELECTRICITY UNDER DRAWAL (EXPORTED) THROUGH DSM, FEBRUARY 2020</b>		
<b>Name of the Entity</b>	<b>Volume of Under drawal (MUs)</b>	<b>% of Volume</b>
NTPC STATIONS-WR	109.98	6.31
MP	91.76	5.26
MAHARASHTRA	80.84	4.64
NLC	79.22	4.54
PUNJAB	73.04	4.19
RAJASTHAN	68.72	3.94
KARNATAKA	67.80	3.89
NTPC STATIONS-NR	64.41	3.70
NHPC STATIONS	63.54	3.65
GUJARAT	60.00	3.44
SASAN UMPP	58.12	3.33
TELANGANA	49.82	2.86
BIHAR	48.37	2.77
UTTAR PRADESH	47.36	2.72
J & K	46.27	2.65
CHHATTISGARH	40.84	2.34
ODISHA	38.08	2.18
DELHI	32.40	1.86
TAMIL NADU	30.06	1.72
ANDHRA PRADESH	28.89	1.66
HARYANA	28.45	1.63
WEST BENGAL	25.44	1.46
NTPC STATIONS-ER	25.43	1.46
NTPC STATIONS-SR	25.41	1.46
DVC	23.29	1.34
ESSAR STEEL	22.34	1.28
GIWEL_BHUI	21.54	1.24
UTTARAKHAND	21.11	1.21
HIMACHAL PRADESH	19.56	1.12
GOA	16.61	0.95
JINDAL STAGE-II	12.03	0.69
JHARKHAND	11.11	0.64
BBMB	10.66	0.61
OSTRO	10.29	0.59
RENEW_BHACHAU	9.88	0.57
MB POWER	8.24	0.47
TRIPURA	8.19	0.47
PONDICHERRY	7.94	0.46
NEEPCO STATIONS	7.81	0.45
BANGLADESH	7.07	0.41
ARUNACHAL PRADESH	6.21	0.36
MEGHALAYA	5.92	0.34
GIWEL_TCN	5.79	0.33
CLEAN_SLR	5.60	0.32
MAITHON POWER LTD	5.52	0.32
NJPC	4.69	0.27
ASSAM	4.44	0.25
JAYPEE NIGRIE	4.42	0.25
BRBCL,NABINAGAR	4.19	0.24
TATA_PVGD	4.15	0.24
AGEMPL BHUI	4.15	0.24
CGPL	4.12	0.24
MYTRAH_TCN	3.98	0.23

AVAADA_PVGD	3.93	0.23
ORANGE_TCN	3.91	0.22
NTPC STATIONS-NER	3.84	0.22
SEMBCORP	3.79	0.22
TEESTA HEP	3.76	0.22
INOX_BHUJ	3.66	0.21
ACME_SLR	3.64	0.21
CHUKHA HEP	3.62	0.21
RAIL	3.59	0.21
DADRA & NAGAR HAVELI	3.50	0.20
BARC	3.44	0.20
RAMPUR HEP	3.39	0.19
ACBIL	3.34	0.19
MANIPUR	3.27	0.19
NEPAL(NVVN)	3.13	0.18
MANGDECHU HEP	3.03	0.17
TATA_SLR	3.01	0.17
JINDAL POWER	3.00	0.17
PARAM_PVGD	2.98	0.17
RENEW_SLR_BKN	2.96	0.17
AZURE_SLR	2.93	0.17
MAHOBIA_SLR	2.89	0.17
SIKKIM	2.87	0.16
LANKO_AMK	2.82	0.16
TEHRI	2.80	0.16
ARINSUM_RUMS	2.74	0.16
NTPC_ANTP	2.71	0.16
CHANDIGARH	2.51	0.14
RKM POWER	2.50	0.14
KERALA	2.36	0.14
ACME_RUMS	2.35	0.13
IGSTPS	2.31	0.13
MAHINDRA_RUMS	2.30	0.13
SB_SLR	2.27	0.13
AZURE34_SLR	2.26	0.13
COASTGEN	2.15	0.12
TATA_ANTP	2.07	0.12
KARCHAM WANGTOO	2.05	0.12
KOTESHWAR	2.01	0.12
FORTUM_PVGD	1.92	0.11
MIZORAM	1.91	0.11
GMR CHATTISGARH	1.90	0.11
TRN ENERGY	1.83	0.10
NAGALAND	1.81	0.10
NTPL	1.79	0.10
EMCO	1.77	0.10
THERMAL POWERTECH	1.76	0.10
NPGC	1.66	0.10
KORBA WEST POWER	1.63	0.09
KSK MAHANADI	1.61	0.09
SBG_NPK	1.59	0.09
DB POWER	1.55	0.09
JITPL	1.54	0.09
TEESTA STG3	1.44	0.08
ADY2_PVGD	1.40	0.08
BETAM_TCN	1.39	0.08
DHARIWAL POWER	1.38	0.08
ESSAR POWER	1.32	0.08

MTPS II	1.27	0.07
SBG_PVGD	1.25	0.07
SKS POWER	1.22	0.07
DGEN MEGA POWER	1.22	0.07
BALCO	1.18	0.07
YARROW_PVGD	1.02	0.06
NETCL VALLUR	1.01	0.06
FRV_NPK	1.00	0.06
ARS_PVGD	0.90	0.05
ADY1_PVGD	0.83	0.05
LOKTAK	0.82	0.05
NSPCL	0.81	0.05
RENEW_PVGD	0.78	0.04
ADY13_PVGD	0.77	0.04
AKSP_ANTP	0.75	0.04
AZURE_ANTP	0.75	0.04
SHREE CEMENT	0.74	0.04
ADHUNIK POWER LTD	0.74	0.04
FRV_ANTP	0.72	0.04
RGPPL (DABHOL)	0.71	0.04
JHABUA POWER_MP	0.71	0.04
GMR KAMALANGA	0.70	0.04
AHSP_ANTP	0.69	0.04
RANGANADI HEP	0.68	0.04
RENEW_SLR	0.66	0.04
AKS_PVGD	0.66	0.04
ABSP_ANTP	0.62	0.04
DAMAN AND DIU	0.61	0.04
RAP B	0.53	0.03
AD HYDRO	0.50	0.03
ONGC PALATANA	0.50	0.03
RANGIT HEP	0.50	0.03
JORETHANG	0.46	0.03
NAPP	0.44	0.03
SAINJ HEP	0.40	0.02
TASHIDENG HEP	0.40	0.02
LANCO BUDHIL	0.39	0.02
IL&FS	0.36	0.02
DOYANG HEP	0.34	0.02
BHADRAVATHI HVDC	0.30	0.02
NEP	0.26	0.01
PARE HEP	0.24	0.01
DIKCHU HEP	0.23	0.01
DCPP	0.22	0.01
CHUZACHEN HEP	0.21	0.01
VINDHYACHAL HVDC	0.19	0.01
HVDC PUS	0.15	0.01
NFF	0.14	0.01
HVDC ALPD	0.11	0.01
KURICHU HEP	0.11	0.01
DAGACHU	0.11	0.01
TALA HEP	0.09	0.01
HVDC CHAMPA	0.03	0.002
RAP C	0.02	0.001
<b>Total</b>	<b>1743.03</b>	<b>100.00</b>
<b>Volume Exported by top 5 Regional Entities</b>	<b>434.84</b>	<b>24.95</b>

<b>Table-14: VOLUME OF ELECTRICITY OVER DRAWAL (IMPORTED) THROUGH DSM, FEBRUARY 2020</b>		
<b>Name of the Entity</b>	<b>Volume of Over drawal (MUs)</b>	<b>% of Volume</b>
UTTAR PRADESH	93.96	6.27
TAMIL NADU	82.42	5.50
RAJASTHAN	79.35	5.29
NTPC STATIONS-NR	57.13	3.81
GUJARAT	54.67	3.65
NTPC STATIONS-WR	53.52	3.57
HARYANA	48.35	3.23
KERALA	44.38	2.96
TELANGANA	41.04	2.74
BIHAR	39.60	2.64
ANDHRA PRADESH	38.84	2.59
TALA HEP	37.25	2.49
NTPC STATIONS-ER	34.90	2.33
KARNATAKA	34.26	2.28
MAHARASHTRA	33.42	2.23
CGPL	30.30	2.02
MP	30.17	2.01
NTPC STATIONS-SR	23.58	1.57
RGPPL (DABHOL)	22.76	1.52
DVC	22.11	1.47
JHARKHAND	21.98	1.47
WEST BENGAL	21.44	1.43
NLC	19.08	1.27
UTTARAKHAND	18.58	1.24
J & K	17.80	1.19
HIMACHAL PRADESH	16.27	1.09
ESSAR STEEL	15.68	1.05
ASSAM	15.04	1.00
ODISHA	14.91	0.99
DAMAN AND DIU	14.57	0.97
KURICHU HEP	13.06	0.87
PUNJAB	13.00	0.87
CHUKHA HEP	12.04	0.80
GIWEL_BHUJ	11.70	0.78
CHHATTISGARH	10.77	0.72
GIWEL_TCN	9.84	0.66
ORANGE_TCN	9.67	0.64
GMR CHATTISGARH	9.48	0.63
BALCO	9.43	0.63
NHPC STATIONS	8.82	0.59
MYTRAH_TCN	8.63	0.58
NETCL VALLUR	8.19	0.55
EMCO	7.61	0.51
JITPL	7.39	0.49
DB POWER	7.38	0.49
ADHUNIK POWER LTD	7.15	0.48
NTPC STATIONS-NER	7.10	0.47
CHANDIGARH	7.01	0.47
BANGLADESH	6.91	0.46
MAHINDRA_RUMS	6.91	0.46
RAP B	6.45	0.43
JHABUA POWER_MP	6.43	0.43
OSTRO	6.40	0.43
MB POWER	6.19	0.41
RENEW_BHACHAU	6.19	0.41

RAP C	6.19	0.41
GMR KAMALANGA	6.17	0.41
NPGC	6.02	0.40
SHREE CEMENT	5.88	0.39
DELHI	5.60	0.37
NEPAL(NVVN)	5.42	0.36
DADRA & NAGAR HAVELI	5.37	0.36
NEP	5.27	0.35
NTPL	4.66	0.31
AGEMPL BHUJ	4.65	0.31
IL&FS	4.48	0.30
SKS POWER	4.29	0.29
THERMAL POWERTECH	4.22	0.28
MAITHON POWER LTD	4.19	0.28
BRBCL,NABINAGAR	4.18	0.28
BBMB	4.14	0.28
OPGC	3.95	0.26
SEMBCORP	3.89	0.26
SIKKIM	3.87	0.26
TRIPURA	3.67	0.24
MEGHALAYA	3.44	0.23
MTPS II	3.35	0.22
MIZORAM	3.33	0.22
ARINSUM_RUMS	3.19	0.21
IGSTPS	3.15	0.21
GOA	3.08	0.21
MANGDECHU HEP	2.95	0.20
NAPP	2.91	0.19
NJPC	2.81	0.19
NAGALAND	2.74	0.18
INOX_BHUJ	2.69	0.18
ESSAR POWER	2.67	0.18
KORBA WEST POWER	2.54	0.17
SBG_NPK	2.53	0.17
KAPP 3&4	2.35	0.16
RAIL	2.31	0.15
DAGACHU	2.28	0.15
ARUNACHAL PRADESH	2.26	0.15
ACBIL	2.26	0.15
TEHRI	2.25	0.15
RKM POWER	2.24	0.15
ACME_RUMS	2.16	0.14
MANIPUR	2.01	0.13
PONDICHERRY	1.98	0.13
NSPCL	1.95	0.13
COASTGEN	1.90	0.13
BETAM_TCN	1.87	0.12
JINDAL STAGE-II	1.86	0.12
TEESTA STG3	1.71	0.11
CLEAN_SLR	1.64	0.11
SBG_PVGD	1.62	0.11
KARCHAM WANGTOO	1.62	0.11
MAHOBIA_SLR	1.51	0.10
RENEW_SLR_BKN	1.43	0.10
TATA_PVGD	1.42	0.09
AZURE_SLR	1.41	0.09
NTPC_ANTP	1.39	0.09
ONGC PALATANA	1.36	0.09

SB_SLR	1.34	0.09
KOTESHWAR	1.26	0.08
RANGANADI HEP	1.17	0.08
HVDC CHAMPA	1.06	0.07
JORETHANG	0.98	0.07
JINDAL POWER	0.98	0.07
ACME_SLR	0.95	0.06
TATA_SLR	0.95	0.06
DGEN MEGA POWER	0.93	0.06
NEEPCO STATIONS	0.88	0.06
KSK MAHANADI	0.82	0.05
ABSP_ANTP	0.71	0.05
AZURE34_SLR	0.70	0.05
RAMPUR HEP	0.65	0.04
TASHIDENG HEP	0.63	0.04
AHSP_ANTP	0.56	0.04
LANKO KONDAPALLI	0.56	0.04
JAYPEE NIGRIE	0.55	0.04
PARAM_PVGD	0.52	0.03
FORTUM_PVGD	0.51	0.03
MEENAKSHI	0.50	0.03
TRN ENERGY	0.50	0.03
AZURE_ANTP	0.48	0.03
RENEW_SLR	0.47	0.03
FRV_NPK	0.42	0.03
AKSP_ANTP	0.41	0.03
SIMHAPURI	0.37	0.02
RENEW_PVGD	0.37	0.02
DOYANG HEP	0.36	0.02
TATA_ANTP	0.35	0.02
DIKCHU HEP	0.34	0.02
FRV_ANTP	0.34	0.02
RANGIT HEP	0.33	0.02
LOKTAK	0.30	0.02
LANKO_AMK	0.30	0.02
AKS_PVGD	0.29	0.02
AD HYDRO	0.28	0.02
YARROW_PVGD	0.28	0.02
CHUZACHEN HEP	0.26	0.02
ADY13_PVGD	0.24	0.02
DHARIWAL POWER	0.23	0.02
AVAADA_PVGD	0.21	0.01
ARS_PVGD	0.18	0.01
SASAN UMPP	0.17	0.01
TEESTA HEP	0.17	0.01
PARE HEP	0.17	0.01
ADY1_PVGD	0.16	0.01
LANCO BUDHIL	0.13	0.01
ADY2_PVGD	0.12	0.01
SAINJ HEP	0.10	0.01
DCPP	0.08	0.01
HVDC ALPD	0.05	0.003
NFF	0.03	0.002
BHADRAVATHI HVDC	0.02	0.001
HVDC PUS	0.01	0.001
BARC	0.00002	0.0000
<b>TOTAL</b>	<b>1499.15</b>	<b>100.00</b>
<b>Volume Imported by top 5 Regional Entities</b>	<b>367.53</b>	<b>24.52</b>

<b>Table-15: TOTAL VOLUME OF NET SHORT-TERM TRANSACTIONS OF ELECTRICITY (REGIONAL ENTITY-WISE), FEBRUARY 2020</b>		
<b>S. No.</b>	<b>Name of the Entity</b>	<b>Total volume of net short-term transactions of electricity*</b>
1	TELANGANA	1099.95
2	TAMIL NADU	753.16
3	ANDHRA PRADESH	424.81
4	HIMACHAL PRADESH	320.94
5	J & K	293.77
6	RAJASTHAN	288.72
7	MAHARASHTRA	271.52
8	ESSAR STEEL	232.16
9	UTTARAKHAND	209.66
10	JORETHANG	163.80
11	KERALA	163.23
12	JHARKHAND	161.67
13	BIHAR	140.46
14	MEGHALAYA	105.37
15	DAMAN AND DIU	54.64
16	MANIPUR	50.71
17	DADRA & NAGAR HAVELI	40.71
18	TALA HEP	37.16
19	PUNJAB	26.85
20	CGPL	26.18
21	RGPPL (DABHOL)	21.54
22	GOA	15.38
23	ARUNACHAL PRADESH	13.61
24	KURICHU HEP	12.95
25	NAGALAND	12.83
26	CHUKHA HEP	8.42
27	NEPAL(NVVN)	7.51
28	NETCL VALLUR	7.18
29	CHHATTISGARH	6.84
30	RAP C	6.17
31	RAP B	5.92
32	ORANGE_TCN	5.76
33	NEP	5.01
34	MYTRAH_TCN	4.66
35	MAHINDRA_RUMS	4.61
36	NPGC	4.36
37	GIWEL_TCN	4.05
38	OPGC	3.95
39	ASSAM	3.83
40	WEST BENGAL	3.79
41	NAPP	2.48
42	EMCO	2.39
43	KAPP 3&4	2.35
44	MTPS II	2.08
45	SIKKIM	1.34
46	NSPCL	1.14
47	HVDC CHAMPA	1.03
48	SBG_NPK	0.94
49	KORBA WEST POWER	0.91
50	IGSTPS	0.84
51	LANKO KONDAPALLI	0.56
52	MEENAKSHI	0.50
53	AGEMPL BHUJ	0.50
54	RANGANADI HEP	0.49
55	BETAM_TCN	0.48
56	ARINSUM_RUMS	0.45

57	SIMHAPURI	0.37
58	SBG_PVGD	0.37
59	ABSP_ANTP	0.09
60	DOYANG HEP	0.02
61	BRBCL,NABINAGAR	-0.02
62	HVDC ALPD	-0.06
63	PARE HEP	-0.07
64	MANGDECHU HEP	-0.08
65	NFF	-0.11
66	AHSP_ANTP	-0.13
67	HVDC PUS	-0.14
68	DCPP	-0.14
69	BANGLADESH	-0.16
70	RANGIT HEP	-0.17
71	ACME_RUMS	-0.18
72	VINDHYACHAL HVDC	-0.19
73	RENEW_SLR	-0.20
74	NTPC STATIONS-ER	-0.25
75	COASTGEN	-0.26
76	AZURE_ANTP	-0.27
77	BHADRAVATHI HVDC	-0.28
78	AKSP_ANTP	-0.34
79	AKS_PVGD	-0.38
80	FRV_ANTP	-0.38
81	RENEW_PVGD	-0.40
82	LOKTAK	-0.52
83	ADY13_PVGD	-0.53
84	NTPL	-0.53
85	TEHRI	-0.55
86	FRV_NPK	-0.58
87	ADY1_PVGD	-0.68
88	ARS_PVGD	-0.71
89	YARROW_PVGD	-0.74
90	KOTESHWAR	-0.76
91	KSK MAHANADI	-0.79
92	LANCO BUDHIL	-0.83
93	SB_SLR	-0.92
94	INOX_BHUJ	-0.97
95	ADY2_PVGD	-1.27
96	RAIL	-1.27
97	NTPC_ANTP	-1.32
98	MAITHON POWER LTD	-1.33
99	TRN ENERGY	-1.33
100	DHARIWAL POWER	-1.34
101	MAHOBA_SLR	-1.38
102	FORTUM_PVGD	-1.41
103	AZURE_SLR	-1.52
104	RENEW_SLR_BKN	-1.52
105	AZURE34_SLR	-1.56
106	TATA_ANTP	-1.73
107	TATA_SLR	-2.06
108	PARAM_PVGD	-2.46
109	ACME_SLR	-2.69
110	TATA_PVGD	-2.73
111	RAMPUR HEP	-2.74
112	BALCO	-3.08
113	NTPC STATIONS-NER	-3.18
114	BARC	-3.44
115	MIZORAM	-3.48
116	TEESTA HEP	-3.59
117	RENEW_BHACHAU	-3.70



118	AVAADA_PVGD	-3.72
119	OSTRO	-3.89
120	CHUZACHEN HEP	-3.94
121	CLEAN_SLR	-3.96
122	DIKCHU HEP	-4.49
123	NJPC	-4.91
124	PONDICHERRY	-5.96
125	BBMB	-6.51
126	NEEPCO STATIONS	-6.93
127	LANKO_AMK	-7.47
128	TASHIDENG HEP	-8.17
129	CHANDIGARH	-8.51
130	GIWEL_BHUI	-9.84
131	SAINJ HEP	-10.62
132	NTPC STATIONS-SR	-10.98
133	NTPC STATIONS-NR	-11.66
134	AD HYDRO	-11.68
135	DAGACHU	-11.98
136	KARCHAM WANGTOO	-12.29
137	ONGC PALATANA	-19.97
138	KARNATAKA	-21.45
139	JHABUA POWER_MP	-27.61
140	ACBIL	-30.72
141	GMR KAMALANGA	-32.72
142	HARYANA	-33.81
143	TRIPURA	-37.38
144	MARUTI COAL	-42.46
145	NHPC STATIONS	-54.73
146	SPECTRUM	-55.62
147	SASAN UMPP	-57.94
148	NTPC STATIONS-WR	-76.53
149	GUJARAT	-79.11
150	IL&FS	-85.45
151	DGEN MEGA POWER	-92.52
152	JINDAL STAGE-II	-93.34
153	REGL	-94.07
154	MB POWER	-102.13
155	SKS POWER	-102.17
156	TEESTA STG3	-103.43
157	JINDAL POWER	-107.34
158	ADHUNIK POWER LTD	-107.59
159	JAYPEE NIGRIE	-117.33
160	SHREE CEMENT	-131.00
161	DVC	-142.81
162	NLC	-170.47
163	MP	-184.58
164	ESSAR POWER	-206.33
165	RKM POWER	-225.57
166	UTTAR PRADESH	-230.72
167	DB POWER	-253.54
168	JITPL	-275.47
169	SEMBCORP	-281.75
170	ODISHA	-313.52
171	DELHI	-320.82
172	GMR CHATTISGARH	-401.59
173	THERMAL POWERTECH	-411.60
* Total volume of net short-term transactions of electricity includes net of transactions of electricity through bilateral, power exchange and UI		
(-) indicates sale and (+) indicates purchase		

<b>Table-16: DETAILS OF CONGESTION IN POWER EXCHANGES, FEBRUARY 2020</b>			
	<b>Details of Congestion</b>	<b>IEX</b>	<b>PXIL</b>
A	Unconstrained Cleared Volume (MUs)	4291.18	0.28
B	Actual Cleared Volume and hence scheduled (MUs)	4289.15	0.28
C	Volume of electricity that could not be cleared and hence not scheduled because of congestion (MUs)*	2.03	0.00
D	Volume of electricity that could not be cleared and hence not scheduled because of reasons other than congestion (MUs)	0.00	0.00
E	Volume of electricity that could not be cleared as % to Unconstrained Cleared Volume	0.05%	0.00%
F	Percentage of the time congestion occurred during the month (Number of hours congestion occurred/Total number of hours in the month)	0.22%	0.00%
G	Congestion occurrence (%) time block wise		
	0.00 - 6.00 hours	0.00%	0.00%
	6.00 - 12.00 hours	100.00%	0.00%
	12.00 - 18.00 hours	0.00%	0.00%
	18.00 - 24.00 hours	0.00%	0.00%
<i>*This power would have been scheduled had there been no congestion.</i>			
<i>Source: IEX &amp; PXIL &amp; NLDC</i>			

<b>Table-17: VOLUME OF SHORT-TERM TRANSACTIONS OF ELECTRICITY IN INDIA (DAY-WISE) (MUs), FEBRUARY 2020</b>						
<b>Date</b>	<b>Bilateral</b>		<b>Power Exchange (Area Clearing Volume<sup>#</sup> of Day Ahead Market)</b>		<b>Deviation Settlement (Over Drawl + Under Generation)</b>	<b>Total Electricity Generation (MU) as given at CEA Website*</b>
	<b>Through Traders and PXs**</b>	<b>Direct</b>	<b>IEX</b>	<b>PXIL</b>		
1-Feb-20	69.36	43.70	155.25	0.01	59.90	3384.31
2-Feb-20	62.37	49.64	134.57	0.02	62.47	3246.92
3-Feb-20	72.31	50.01	128.72	0.02	58.64	3412.49
4-Feb-20	67.15	41.35	145.49	0.00	58.14	3490.78
5-Feb-20	65.17	48.60	150.96	0.00	54.85	3499.66
6-Feb-20	68.17	54.11	145.43	0.00	56.35	3507.84
7-Feb-20	66.83	53.69	147.02	0.00	55.19	3510.64
8-Feb-20	68.28	53.78	144.30	0.00	56.01	3436.72
9-Feb-20	68.85	49.67	126.54	0.00	55.65	3276.37
10-Feb-20	69.22	53.17	135.54	0.00	56.70	3375.03
11-Feb-20	68.17	48.59	146.44	0.00	53.96	3448.97
12-Feb-20	67.57	47.52	142.15	0.00	52.93	3480.73
13-Feb-20	66.56	47.00	149.04	0.00	54.35	3559.38
14-Feb-20	67.34	44.67	150.11	0.00	53.28	3577.28
15-Feb-20	76.64	49.15	149.20	0.00	53.68	3589.75
16-Feb-20	66.28	48.71	151.27	0.00	54.71	3439.42
17-Feb-20	67.47	56.25	152.91	0.03	54.03	3538.27
18-Feb-20	68.06	56.77	159.87	0.03	52.45	3641.97
19-Feb-20	66.83	55.97	163.19	0.03	54.70	3650.90
20-Feb-20	67.39	55.45	158.54	0.03	59.72	3569.14
21-Feb-20	68.41	55.90	156.96	0.03	57.16	3432.04
22-Feb-20	68.57	55.22	160.27	0.03	57.51	3441.33
23-Feb-20	66.87	51.84	142.52	0.03	53.09	3362.58
24-Feb-20	68.06	54.18	155.46	0.03	55.24	3521.63
25-Feb-20	70.37	54.44	151.57	0.00	58.94	3582.47
26-Feb-20	69.60	54.21	157.44	0.00	56.69	3565.92
27-Feb-20	68.24	52.19	143.04	0.00	55.12	3594.64
28-Feb-20	67.44	52.99	141.96	0.00	52.91	3516.14
29-Feb-20	69.44	47.32	143.41	0.00	56.73	3475.84
<b>Total</b>	<b>1977.04</b>	<b>1486.08</b>	<b>4289.15</b>	<b>0.28</b>	<b>1621.09</b>	<b>101129.16</b>

Source: NLDC

\* Gross Electricity Generation excluding electricity generation from renewables and captive power plants.

\*\* The volume of bilateral through PXs represents the volume through term-ahead contracts.

# Area Clearing Volume represents the scheduled volume of all the bid areas.

<b>Table-18: PRICE OF SHORT-TERM TRANSACTIONS OF ELECTRICITY (DAY-WISE)(₹/kWh), FEBRUARY 2020</b>									
<b>Market Segment</b>	<b>Day ahead market of IEX</b>			<b>Day ahead market of PXIL</b>			<b>Under Drawl/Over Drawl from the Grid (DSM)</b>		
<b>Date</b>	<b>Mini mum ACP</b>	<b>Maxi mum ACP</b>	<b>Weighted Average Price*</b>	<b>Mini mum ACP</b>	<b>Maxi mum ACP</b>	<b>Weighted Average Price*</b>	<b>All India Grid</b>		
							<b>Minim um Price</b>	<b>Maxi mum Price</b>	<b>Average Price**</b>
1-Feb-20	1.79	4.67	3.07	3.65	3.65	3.65	0.00	6.72	2.63
2-Feb-20	1.86	3.68	2.82	2.57	2.89	2.72	0.00	7.67	2.39
3-Feb-20	1.00	3.96	2.78	2.61	2.87	2.73	0.00	8.00	3.86
4-Feb-20	1.82	4.32	3.14	-	-	-	0.00	8.00	4.17
5-Feb-20	2.30	4.49	3.13	-	-	-	0.00	8.00	3.10
6-Feb-20	2.30	4.69	3.16	-	-	-	0.00	7.07	3.10
7-Feb-20	2.33	4.87	3.22	-	-	-	0.00	7.08	3.05
8-Feb-20	2.00	4.03	2.95	-	-	-	0.00	8.00	2.89
9-Feb-20	2.00	3.70	2.85	-	-	-	0.00	7.35	2.53
10-Feb-20	1.80	3.96	2.97	-	-	-	0.00	6.07	2.00
11-Feb-20	2.00	4.01	3.04	-	-	-	0.00	7.37	2.70
12-Feb-20	1.97	3.79	2.91	-	-	-	0.00	7.68	3.12
13-Feb-20	2.22	3.96	3.07	-	-	-	0.00	8.00	3.66
14-Feb-20	2.25	4.18	3.11	-	-	-	0.00	7.38	3.17
15-Feb-20	2.30	4.05	3.16	-	-	-	0.00	7.07	2.98
16-Feb-20	2.39	4.17	3.16	-	-	-	0.00	6.14	2.78
17-Feb-20	2.25	5.00	3.20	3.10	3.10	3.10	0.00	5.85	2.61
18-Feb-20	2.39	4.85	3.18	3.14	3.14	3.14	0.00	7.69	3.52
19-Feb-20	2.43	4.57	3.24	3.09	3.14	3.13	0.00	7.70	2.96
20-Feb-20	2.35	4.85	3.08	3.19	3.31	3.28	0.00	7.06	2.74
21-Feb-20	2.20	3.63	2.89	3.25	3.25	3.25	0.00	8.00	3.16
22-Feb-20	2.30	4.29	3.02	3.16	3.16	3.16	0.00	7.37	2.97
23-Feb-20	2.30	3.75	2.84	3.15	3.15	3.15	0.00	6.37	2.76
24-Feb-20	2.17	3.98	2.96	3.27	3.27	3.27	0.00	8.00	3.38
25-Feb-20	2.00	3.74	2.96	-	-	-	0.00	8.00	3.32
26-Feb-20	2.27	4.50	3.13	-	-	-	0.00	8.00	3.01
27-Feb-20	2.20	4.00	2.89	-	-	-	0.00	6.37	2.76
28-Feb-20	2.04	4.00	2.86	-	-	-	0.00	6.69	2.69
29-Feb-20	2.00	4.31	2.73	-	-	-	0.00	7.67	2.86
	<b>1.00#</b>	<b>5.00#</b>	<b>3.02</b>	<b>2.57#</b>	<b>3.65#</b>	<b>3.14</b>	<b>0.00#</b>	<b>8.00#</b>	<b>3.00</b>

Source: Data on price of PX transactions from IEX and PXIL and data on DSM Price from NLDC.

\* Weighted average price computed based on Area Clearing Volume (ACV) and Area Clearing Price (ACP) for each hour of the day. Here, ACV and ACP represent the scheduled volume and weighted average price of all the bid areas of power exchanges.

\*\* Simple average price of DSM of 96 time blocks of 15 minutes each in a day. DSM price includes Ceiling DSM Rate +40% additional DSM charge.

# Maximum/Minimum in the month

Table-19: VOLUME OF SHORT-TERM TRANSACTIONS OF ELECTRICITY (REGIONAL ENTITY*-WISE) (MUs), FEBRUARY 2020										
Name of the Entity	Through Bilateral			Through Power Exchange			Through DSM with Regional Grid			Total Net***
	Sale	Purchase	Net**	Sale	Purchase	Net**	Import (Over Draw)	Export (Under Draw)	Net**	
PUNJAB	82.91	0.10	-82.81	0.00	169.70	169.70	13.00	73.04	-60.04	26.85
HARYANA	196.75	21.15	-175.60	42.84	164.73	121.89	48.35	28.45	19.90	-33.81
RAJASTHAN	58.64	273.43	214.79	140.71	204.01	63.30	79.35	68.72	10.63	288.72
DELHI	402.14	32.49	-369.65	97.96	173.60	75.64	5.60	32.40	-26.80	-320.82
UP	221.65	26.24	-195.40	186.98	105.06	-81.92	93.96	47.36	46.60	-230.72
UTTARAKHAND	0.00	194.96	194.96	30.80	48.03	17.23	18.58	21.11	-2.53	209.66
H P	9.84	460.54	450.71	147.43	20.95	-126.48	16.27	19.56	-3.28	320.94
J & K	25.03	0.00	-25.03	0.45	347.70	347.26	17.80	46.27	-28.47	293.77
CHANDIGARH	0.00	0.00	0.00	15.78	2.77	-13.01	7.01	2.51	4.50	-8.51
MP	42.03	140.59	98.56	228.20	6.64	-221.56	30.17	91.76	-61.58	-184.58
MAHARASHTRA	81.72	58.85	-22.88	22.49	364.30	341.81	33.42	80.84	-47.42	271.52
GUJARAT	120.06	221.51	101.45	586.80	411.56	-175.24	54.67	60.00	-5.33	-79.11
CHHATTISGARH	0.00	51.54	51.54	86.29	71.66	-14.63	10.77	40.84	-30.07	6.84
GOA	0.00	39.79	39.79	21.95	11.06	-10.88	3.08	16.61	-13.53	15.38
DAMAN AND DIU	0.00	0.00	0.00	0.00	40.68	40.68	14.57	0.61	13.96	54.64
DADRA & NAGAR HAVELI	0.00	0.15	0.15	0.02	38.71	38.69	5.37	3.50	1.87	40.71
ANDHRA PRADESH	14.36	254.09	239.73	13.43	188.55	175.12	38.84	28.89	9.95	424.81
KARNATAKA	31.85	0.44	-31.41	52.55	96.05	43.50	34.26	67.80	-33.54	-21.45
KERALA	0.00	80.52	80.52	2.86	43.54	40.68	44.38	2.36	42.02	163.23
TAMIL NADU	4.98	378.00	373.02	11.02	338.80	327.78	82.42	30.06	52.37	753.16
PONDICHERRY	0.00	0.00	0.00	0.00	0.00	0.00	1.98	7.94	-5.96	-5.96
TELANGANA	10.88	185.18	174.30	15.89	950.33	934.44	41.04	49.82	-8.78	1099.95
WEST BENGAL	188.96	151.55	-37.41	26.37	71.57	45.20	21.44	25.44	-4.00	3.79
ODISHA	102.09	11.93	-90.16	238.01	37.83	-200.19	14.91	38.08	-23.17	-313.52
BIHAR	146.79	181.56	34.76	59.54	174.00	114.46	39.60	48.37	-8.77	140.46
JHARKHAND	0.00	117.59	117.59	16.86	50.08	33.22	21.98	11.11	10.87	161.67
SIKKIM	0.00	5.58	5.58	5.24	0.00	-5.24	3.87	2.87	1.00	1.34
DVC	137.98	0.00	-137.98	3.65	0.00	-3.65	22.11	23.29	-1.18	-142.81
ARUNACHAL PRADESH	0.00	18.34	18.34	0.78	0.00	-0.78	2.26	6.21	-3.95	13.61
ASSAM	0.00	43.86	43.86	100.58	49.94	-50.64	15.04	4.44	10.60	3.83
MANIPUR	0.00	81.51	81.51	29.54	0.00	-29.54	2.01	3.27	-1.25	50.71
MEGHALAYA	2.14	84.28	82.14	0.00	25.71	25.71	3.44	5.92	-2.48	105.37
MIZORAM	0.00	0.00	0.00	4.91	0.00	-4.91	3.33	1.91	1.42	-3.48
NAGALAND	0.00	11.89	11.89	0.00	0.00	0.00	2.74	1.81	0.94	12.83
TRIPURA	0.00	0.00	0.00	34.05	1.19	-32.86	3.67	8.19	-4.52	-37.38
NTPC STNS-NR	0.40	0.00	-0.40	3.98	0.00	-3.98	57.13	64.41	-7.28	-11.66
NHPC STNS	0.00	0.00	0.00	0.00	0.00	0.00	8.82	63.54	-54.73	-54.73
NFF	0.00	0.00	0.00	0.00	0.00	0.00	0.03	0.14	-0.11	-0.11
RAIL	0.00	0.00	0.00	0.00	0.00	0.00	2.31	3.59	-1.27	-1.27
NEP	0.00	0.00	0.00	0.00	0.00	0.00	5.27	0.26	5.01	5.01
NAPP	0.00	0.00	0.00	0.00	0.00	0.00	2.91	0.44	2.48	2.48
RAP B	0.00	0.00	0.00	0.00	0.00	0.00	6.45	0.53	5.92	5.92
NJPC	0.00	0.00	0.00	3.02	0.00	-3.02	2.81	4.69	-1.89	-4.91
TEHRI	0.00	0.00	0.00	0.00	0.00	0.00	2.25	2.80	-0.55	-0.55
BBMB	0.00	0.00	0.00	0.00	0.00	0.00	4.14	10.66	-6.51	-6.51
RAP C	0.00	0.00	0.00	0.00	0.00	0.00	6.19	0.02	6.17	6.17
AD HYDRO	0.00	0.00	0.00	11.46	0.00	-11.46	0.28	0.50	-0.22	-11.68
IGSTPS	0.00	0.00	0.00	0.00	0.00	0.00	3.15	2.31	0.84	0.84
KOTESHWAR	0.00	0.00	0.00	0.00	0.00	0.00	1.26	2.01	-0.76	-0.76
KARCHAM WANGTI	0.00	0.00	0.00	11.86	0.00	-11.86	1.62	2.05	-0.43	-12.29
SHREE CEMENT	134.52	0.00	-134.52	1.62	0.00	-1.62	5.88	0.74	5.14	-131.00
LANCO BUDHIL	0.00	0.00	0.00	0.57	0.00	-0.57	0.13	0.39	-0.26	-0.83
RAMPUR HEP	0.00	0.00	0.00	0.00	0.00	0.00	0.65	3.39	-2.74	-2.74
SAINJ HEP	0.00	0.00	0.00	10.32	0.00	-10.32	0.10	0.40	-0.30	-10.62
RENEW_SLR	0.00	0.00	0.00	0.00	0.00	0.00	0.47	0.66	-0.20	-0.20
AZURE_SLR	0.00	0.00	0.00	0.00	0.00	0.00	1.41	2.93	-1.52	-1.52
SB_SLR	0.00	0.00	0.00	0.00	0.00	0.00	1.34	2.27	-0.92	-0.92

MAHOBA_SLR	0.00	0.00	0.00	0.00	0.00	0.00	1.51	2.89	-1.38	-1.38
ACME_SLR	0.00	0.00	0.00	0.00	0.00	0.00	0.95	3.64	-2.69	-2.69
AZURE34_SLR	0.00	0.00	0.00	0.00	0.00	0.00	0.70	2.26	-1.56	-1.56
TATA_SLR	0.00	0.00	0.00	0.00	0.00	0.00	0.95	3.01	-2.06	-2.06
RENEW_SLR_BKN	0.00	0.00	0.00	0.00	0.00	0.00	1.43	2.96	-1.52	-1.52
CLEAN_SLR	0.00	0.00	0.00	0.00	0.00	0.00	1.64	5.60	-3.96	-3.96
NTPC STATIONS-W	0.00	0.00	0.00	20.06	0.00	-20.06	53.52	109.98	-56.46	-76.53
BHADRAVATHI HV	0.00	0.00	0.00	0.00	0.00	0.00	0.02	0.30	-0.28	-0.28
VINDHYACHAL HV	0.00	0.00	0.00	0.00	0.00	0.00	0.00	0.19	-0.19	-0.19
JINDAL POWER	0.00	0.00	0.00	105.32	0.00	-105.32	0.98	3.00	-2.02	-107.34
LANKO_AMK	4.96	0.00	-4.96	0.00	0.00	0.00	0.30	2.82	-2.52	-7.47
NSPCL	0.00	0.00	0.00	0.00	0.00	0.00	1.95	0.81	1.14	1.14
ACBIL	1.06	0.00	-1.06	28.57	0.00	-28.57	2.26	3.34	-1.08	-30.72
BALCO	11.03	0.00	-11.03	0.31	0.00	-0.31	9.43	1.18	8.26	-3.08
RGPPL (DABHOL)	0.00	0.00	0.00	0.50	0.00	-0.50	22.76	0.71	22.04	21.54
CGPL	0.00	0.00	0.00	0.00	0.00	0.00	30.30	4.12	26.18	26.18
DCPP	0.00	0.00	0.00	0.00	0.00	0.00	0.08	0.22	-0.14	-0.14
EMCO	0.00	0.00	0.00	3.46	0.00	-3.46	7.61	1.77	5.84	2.39
ESSAR STEEL	0.00	158.18	158.18	0.00	80.65	80.65	15.68	22.34	-6.67	232.16
KSK MAHANADI	0.00	0.00	0.00	0.00	0.00	0.00	0.82	1.61	-0.79	-0.79
ESSAR POWER	160.67	0.00	-160.67	47.00	0.00	-47.00	2.67	1.32	1.34	-206.33
JINDAL STAGE-II	0.00	0.00	0.00	83.17	0.00	-83.17	1.86	12.03	-10.17	-93.34
DB POWER	86.75	0.00	-86.75	172.62	0.00	-172.62	7.38	1.55	5.83	-253.54
DHARIWAL POWER	0.00	0.00	0.00	0.19	0.00	-0.19	0.23	1.38	-1.15	-1.34
JAYPEE NIGRIE	2.94	0.00	-2.94	110.51	0.00	-110.51	0.55	4.42	-3.87	-117.33
DGEN MEGA POWER	0.40	0.00	-0.40	91.82	0.00	-91.82	0.93	1.22	-0.29	-92.52
GMR CHATTISGAR	307.25	0.00	-307.25	101.92	0.00	-101.92	9.48	1.90	7.58	-401.59
KORBA WEST POWER	0.00	0.00	0.00	0.00	0.00	0.00	2.54	1.63	0.91	0.91
MB POWER	1.51	0.00	-1.51	98.58	0.00	-98.58	6.19	8.24	-2.05	-102.13
MARUTI COAL	0.00	0.00	0.00	42.46	0.00	-42.46	0.00	0.00	0.00	-42.46
SPECTRUM	0.00	0.00	0.00	55.62	0.00	-55.62	0.00	0.00	0.00	-55.62
JHABUA POWER M	3.75	0.00	-3.75	29.58	0.00	-29.58	6.43	0.71	5.72	-27.61
SASAN UMPP	0.00	0.00	0.00	0.00	0.00	0.00	0.17	58.12	-57.94	-57.94
TRN ENERGY	0.00	0.00	0.00	0.00	0.00	0.00	0.50	1.83	-1.33	-1.33
RKM POWER	225.31	0.00	-225.31	0.00	0.00	0.00	2.24	2.50	-0.26	-225.57
SKS POWER	21.14	0.00	-21.14	84.10	0.00	-84.10	4.29	1.22	3.07	-102.17
BARC	0.00	0.00	0.00	0.00	0.00	0.00	0.00	3.44	-3.44	-3.44
KAPP 3&4	0.00	0.00	0.00	0.00	0.00	0.00	2.35	0.00	2.35	2.35
HVDC CHAMPA	0.00	0.00	0.00	0.00	0.00	0.00	1.06	0.03	1.03	1.03
MAHINDRA_RUMS	0.00	0.00	0.00	0.00	0.00	0.00	6.91	2.30	4.61	4.61
ARINSUM_RUMS	0.00	0.00	0.00	0.00	0.00	0.00	3.19	2.74	0.45	0.45
OSTRO	0.00	0.00	0.00	0.00	0.00	0.00	6.40	10.29	-3.89	-3.89
ACME_RUMS	0.00	0.00	0.00	0.00	0.00	0.00	2.16	2.35	-0.18	-0.18
RENEW_BHACHAU	0.00	0.00	0.00	0.00	0.00	0.00	6.19	9.88	-3.70	-3.70
GIWEL_BHUJ	0.00	0.00	0.00	0.00	0.00	0.00	11.70	21.54	-9.84	-9.84
INOX_BHUJ	0.00	0.00	0.00	0.00	0.00	0.00	2.69	3.66	-0.97	-0.97
AGEMPL BHUJ	0.00	0.00	0.00	0.00	0.00	0.00	4.65	4.15	0.50	0.50
REGL	12.56	0.00	-12.56	81.51	0.00	-81.51	0.00	0.00	0.00	-94.07
NTPC STNS-SR	0.00	0.00	0.00	9.14	0.00	-9.14	23.58	25.41	-1.83	-10.98
LANKO KONDAPAI	0.00	0.00	0.00	0.00	0.00	0.00	0.56	0.00	0.56	0.56
SIMHAPURI	0.00	0.00	0.00	0.00	0.00	0.00	0.37	0.00	0.37	0.37
MEENAKSHI	0.00	0.00	0.00	0.00	0.00	0.00	0.50	0.00	0.50	0.50
COASTGEN	0.00	0.00	0.00	0.00	0.00	0.00	1.90	2.15	-0.26	-0.26
THERMAL POWER	316.63	0.00	-316.63	97.42	0.00	-97.42	4.22	1.76	2.45	-411.60
IL&FS	74.82	0.00	-74.82	14.74	0.00	-14.74	4.48	0.36	4.12	-85.45
NLC	0.00	0.00	0.00	110.33	0.00	-110.33	19.08	79.22	-60.14	-170.47
SEMBCORP	0.00	0.00	0.00	281.85	0.00	-281.85	3.89	3.79	0.10	-281.75
NETCL VALLUR	0.00	0.00	0.00	0.00	0.00	0.00	8.19	1.01	7.18	7.18
NTPL	0.00	0.00	0.00	3.40	0.00	-3.40	4.66	1.79	2.86	-0.53
AHSP_ANTP	0.00	0.00	0.00	0.00	0.00	0.00	0.56	0.69	-0.13	-0.13
AKSP_ANTP	0.00	0.00	0.00	0.00	0.00	0.00	0.41	0.75	-0.34	-0.34
ABSP_ANTP	0.00	0.00	0.00	0.00	0.00	0.00	0.71	0.62	0.09	0.09
AZURE_ANTP	0.00	0.00	0.00	0.00	0.00	0.00	0.48	0.75	-0.27	-0.27
TATA_ANTP	0.00	0.00	0.00	0.00	0.00	0.00	0.35	2.07	-1.73	-1.73

FRV_ANTP	0.00	0.00	0.00	0.00	0.00	0.00	0.34	0.72	-0.38	-0.38
NTPC_ANTP	0.00	0.00	0.00	0.00	0.00	0.00	1.39	2.71	-1.32	-1.32
GIWEL_TCN	0.00	0.00	0.00	0.00	0.00	0.00	9.84	5.79	4.05	4.05
MYTRAH_TCN	0.00	0.00	0.00	0.00	0.00	0.00	8.63	3.98	4.66	4.66
FRV_NPK	0.00	0.00	0.00	0.00	0.00	0.00	0.42	1.00	-0.58	-0.58
ORANGE_TCN	0.00	0.00	0.00	0.00	0.00	0.00	9.67	3.91	5.76	5.76
BETAM_TCN	0.00	0.00	0.00	0.00	0.00	0.00	1.87	1.39	0.48	0.48
SBG_PVGD	0.00	0.00	0.00	0.00	0.00	0.00	1.62	1.25	0.37	0.37
SBG_NPK	0.00	0.00	0.00	0.00	0.00	0.00	2.53	1.59	0.94	0.94
FORTUM_PVGD	0.00	0.00	0.00	0.00	0.00	0.00	0.51	1.92	-1.41	-1.41
PARAM_PVGD	0.00	0.00	0.00	0.00	0.00	0.00	0.52	2.98	-2.46	-2.46
YARROW_PVGD	0.00	0.00	0.00	0.00	0.00	0.00	0.28	1.02	-0.74	-0.74
TATA_PVGD	0.00	0.00	0.00	0.00	0.00	0.00	1.42	4.15	-2.73	-2.73
RENEW_PVGD	0.00	0.00	0.00	0.00	0.00	0.00	0.37	0.78	-0.40	-0.40
AKS_PVGD	0.00	0.00	0.00	0.00	0.00	0.00	0.29	0.66	-0.38	-0.38
ARS_PVGD	0.00	0.00	0.00	0.00	0.00	0.00	0.18	0.90	-0.714	-0.714
AVAADA_PVGD	0.00	0.00	0.00	0.00	0.00	0.00	0.21	3.93	-3.72	-3.72
ADY1_PVGD	0.00	0.00	0.00	0.00	0.00	0.00	0.16	0.83	-0.68	-0.68
ADY2_PVGD	0.00	0.00	0.00	0.00	0.00	0.00	0.12	1.40	-1.27	-1.27
ADY13_PVGD	0.00	0.00	0.00	0.00	0.00	0.00	0.24	0.77	-0.53	-0.53
NTPC STNS-ER	0.77	0.00	-0.77	8.96	0.00	-8.96	34.90	25.43	9.47	-0.25
MAITHON POWER	0.00	0.00	0.00	0.00	0.00	0.00	4.19	5.52	-1.33	-1.33
NPGC	0.00	0.00	0.00	0.00	0.00	0.00	6.02	1.66	4.36	4.36
ADHUNIK POWER	113.66	0.00	-113.66	0.35	0.00	-0.35	7.15	0.74	6.41	-107.59
CHUZACHEN HEP	3.46	0.00	-3.46	0.53	0.00	-0.53	0.26	0.21	0.05	-3.94
RANGIT HEP	0.00	0.00	0.00	0.00	0.00	0.00	0.33	0.50	-0.17	-0.17
GMR KAMALANGA	34.80	0.00	-34.80	3.39	0.00	-3.39	6.17	0.70	5.47	-32.72
JITPL	76.54	0.00	-76.54	204.78	0.00	-204.78	7.39	1.54	5.85	-275.47
TEESTA HEP	0.00	0.00	0.00	0.00	0.00	0.00	0.17	3.76	-3.59	-3.59
DAGACHU	14.16	0.00	-14.16	0.00	0.00	0.00	2.28	0.11	2.18	-11.98
JORETHANG	0.00	172.08	172.08	8.80	0.00	-8.80	0.98	0.46	0.53	163.80
NEPAL(NVVN)	0.00	5.21	5.21	0.00	0.00	0.00	5.42	3.13	2.30	7.51
BANGLADESH	0.00	0.00	0.00	0.00	0.00	0.00	6.91	7.07	-0.16	-0.16
HVDC PUS	0.00	0.00	0.00	0.00	0.00	0.00	0.01	0.15	-0.14	-0.14
TEESTA STG3	0.00	0.00	0.00	103.71	0.00	-103.71	1.71	1.44	0.28	-103.43
DIKCHU HEP	0.00	0.00	0.00	4.60	0.00	-4.60	0.34	0.23	0.11	-4.49
HVDC ALPD	0.00	0.00	0.00	0.00	0.00	0.00	0.05	0.11	-0.06	-0.06
TASHIDENG HEP	0.00	0.00	0.00	8.41	0.00	-8.41	0.63	0.40	0.24	-8.17
OPGC	0.00	0.00	0.00	0.00	0.00	0.00	3.95	0.00	3.95	3.95
BRBCL,NABINAGA	0.00	0.00	0.00	0.01	0.00	-0.01	4.18	4.19	-0.01	-0.02
MTPS II	0.00	0.00	0.00	0.00	0.00	0.00	3.35	1.27	2.08	2.08
TALA HEP	0.00	0.00	0.00	0.00	0.00	0.00	37.25	0.09	37.16	37.16
CHUKHA HEP	0.00	0.00	0.00	0.00	0.00	0.00	12.04	3.62	8.42	8.42
KURICHU HEP	0.00	0.00	0.00	0.00	0.00	0.00	13.06	0.11	12.95	12.95
MANGDECHU HEP	0.00	0.00	0.00	0.00	0.00	0.00	2.95	3.03	-0.08	-0.08
NTPC STNS-NER	2.74	0.00	-2.74	3.70	0.00	-3.70	7.10	3.84	3.26	-3.18
NEEPCO STNS	0.00	0.00	0.00	0.00	0.00	0.00	0.88	7.81	-6.93	-6.93
RANGANADI HEP	0.00	0.00	0.00	0.00	0.00	0.00	1.17	0.68	0.49	0.49
DOYANG HEP	0.00	0.00	0.00	0.00	0.00	0.00	0.36	0.34	0.02	0.02
ONGC PALATANA	19.64	0.00	-19.64	1.19	0.00	-1.19	1.36	0.50	0.86	-19.97
LOKTAK	0.00	0.00	0.00	0.00	0.00	0.00	0.30	0.82	-0.52	-0.52
PARE HEP	0.00	0.00	0.00	0.00	0.00	0.00	0.17	0.24	-0.07	-0.07

Source: NLDC

\* in case of a state, the entities which are "selling" also include generators connected to state grid and the entities which are "buying" also include open access consumers.

\*\* (-) indicates sale and (+) indicates purchase.

\*\*\* Total net includes net of transactions through bilateral, power exchange and DSM

<b>Table-20 : VOLUME AND PRICE OF RENEWABLE ENERGY CERTIFICATES (RECs) TRANSACTED THROUGH POWER EXCHANGES, FEBRUARY 2020</b>					
<b>Sr. No.</b>	<b>Details of REC Transactions</b>	<b>IEX</b>		<b>PXIL</b>	
		<b>Solar</b>	<b>Non-Solar</b>	<b>Solar</b>	<b>Non Solar</b>
A	Volume of Buy Bid	1094700	661976	365463	498335
B	Volume of Sell Bid	1014459	2779466	332042	843886
C	Ratio of Buy Bid to Sell Bid Volume	1.08	0.24	1.10	0.59
D	Market Clearing Volume (MWh)	984157	507153	315580	335520
E	Weighted average Market Clearing Price (₹/MWh)	2400	1800	2400	2050

Source: IEX and PXIL

Note 1: 1 REC = 1 MWh

Note 2:

<i>Forbearance and Floor Price w.e.f 1<sup>st</sup> April 2017</i>		
Type of REC	Floor Price (₹/MWh)	Forbearance Price (₹/MWh)
<i>Solar</i>	<i>1000.00</i>	<i>2400.00</i>
<i>Non-Solar</i>	<i>1000.00</i>	<i>3000.00</i>